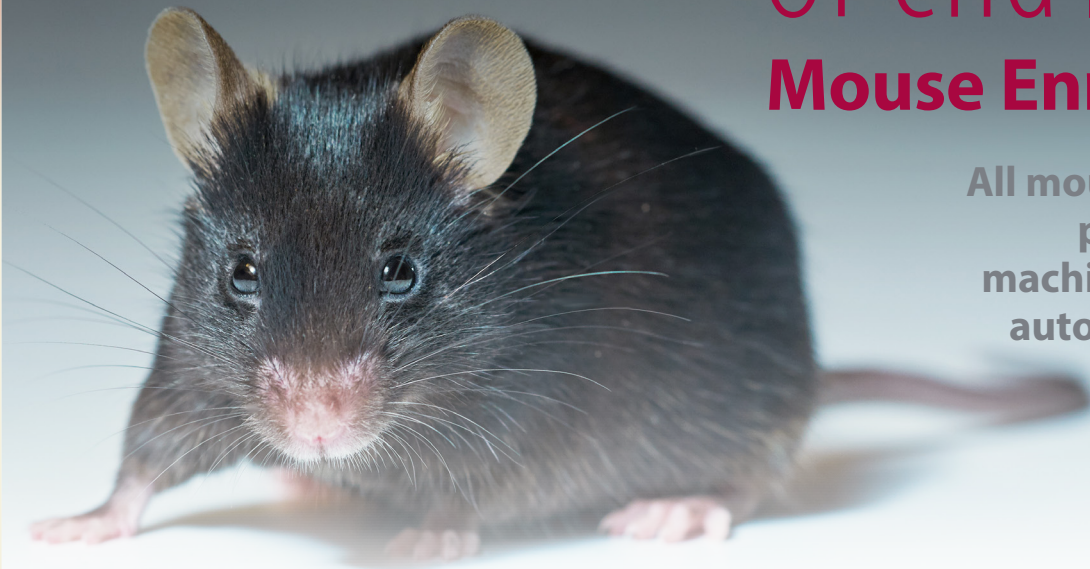


# OPend Life Science Solutions

## Mouse Enrichment

All mouse enrichment products can be machine washed and autoclaved at 121°C



### Mouse Tube Clip

- The Mouse Tube Clip comes in a red transparent polycarbonate.
- Featuring two tabs, this clip allows you to hang the mouse tube in the wire bar lid in two different orientations.



### Mouse Tube

- The Mouse tube comes in clear transparent and red transparent polycarbonate.
- Size: 98,5mm (length), Ø 57,9 mm one end and Ø 54,4 mm the other end (slightly conical). 3 mm material.
- Injection moulded to avoid sharp edges.



### Mice Bunker

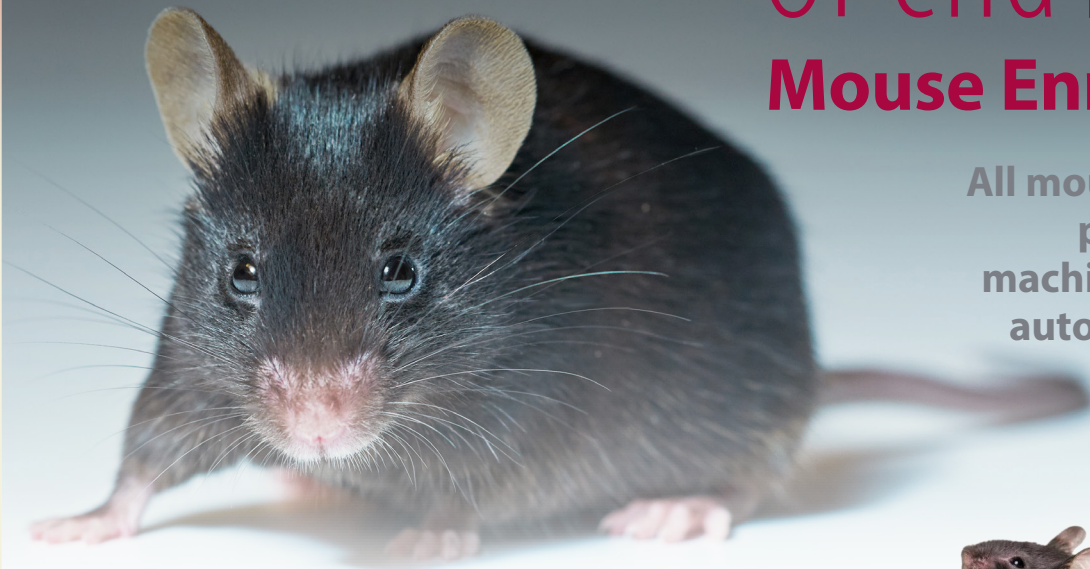
- The Mice Bunker is made of red transparent polycarbonate.
- Size: 100x90x60mm. Top opening Ø 21 mm. Side openings W31 x H35 mm.



# OPend Life Science Solutions

## Mouse Enrichment

All mouse enrichment products can be machine washed and autoclaved at 121°C



### DomicelSLE

- The DomicelSLE is made of polycarbonate in transparent red
- Size: 137x71x78mm



### Large Mouse House

- Available in red, blue and transparent polycarbonate.
- Foot print: 110 x 114 x H 65 mm.
- Top dimensions: 120 x 90 mm, side openings W39 x H37 mm. Top opening Ø 38 mm.

